



AltRider Mesh Headlight Guard for the Ducati Scrambler INSTALLATION INSTRUCTIONS

The most up to date instructions can be downloaded from the product page at altrider.com, under the instructions tab.

Dear Rider,
Thank you for choosing AltRider! Whether a seasoned world adventurer or a first time ADV-Newbie, we welcome you to the AltRider experience. You can install your new product with the utmost confidence. AltRider designs, tests, and manufactures all of its products here in the United States. We are proud to do what we do, and honored to present to you the product of our labors.

Enjoy it, show it off, and most of all, RIDE IT!

Venture On,
Jeremy LeBreton



Mesh Headlight Guard for the Ducati Scrambler

Package Contents:
-guard
-hardware

AltRider LLC

Global

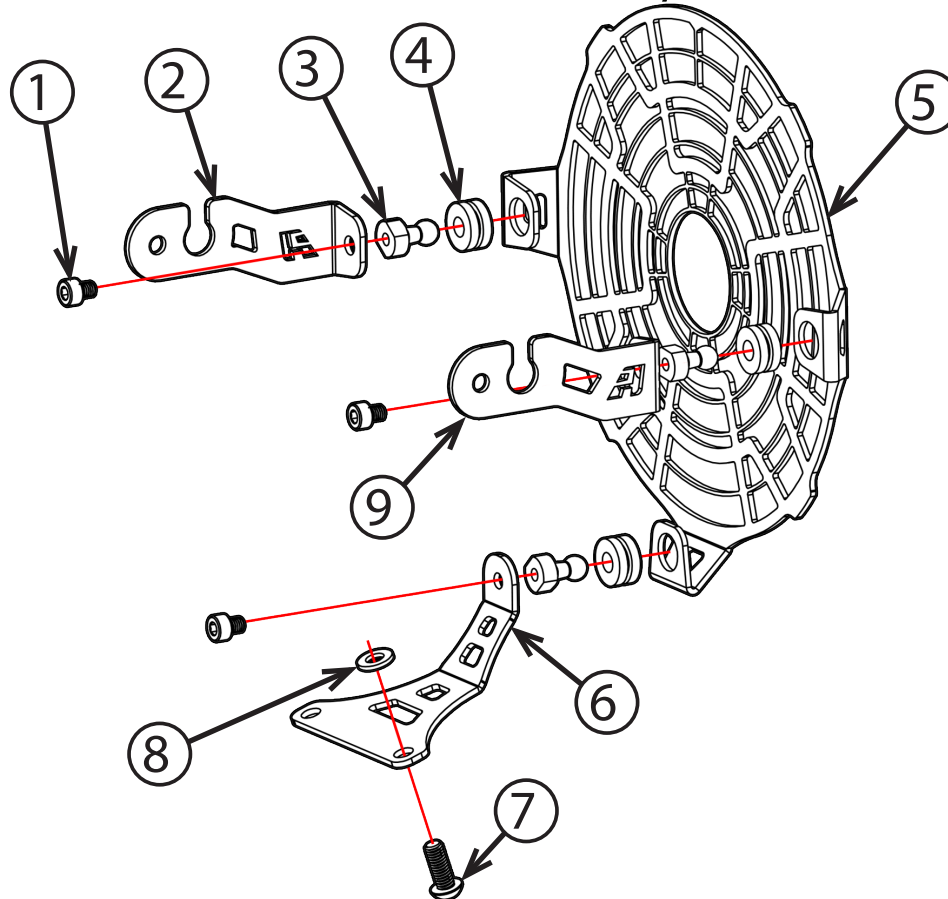
mailing: 4000 Aurora Ave N Ste 100
Seattle, WA 98103 USA
phone: 206-922-3618
email: info@altrider.com
web: www.altrider.com

Europe

mailing: Heliumstraat 230
2718 RS Zoetermeer
The Netherlands
email: info@altrider.eu
web: www.altrider.eu

Rev 1.0
MADE IN THE USA



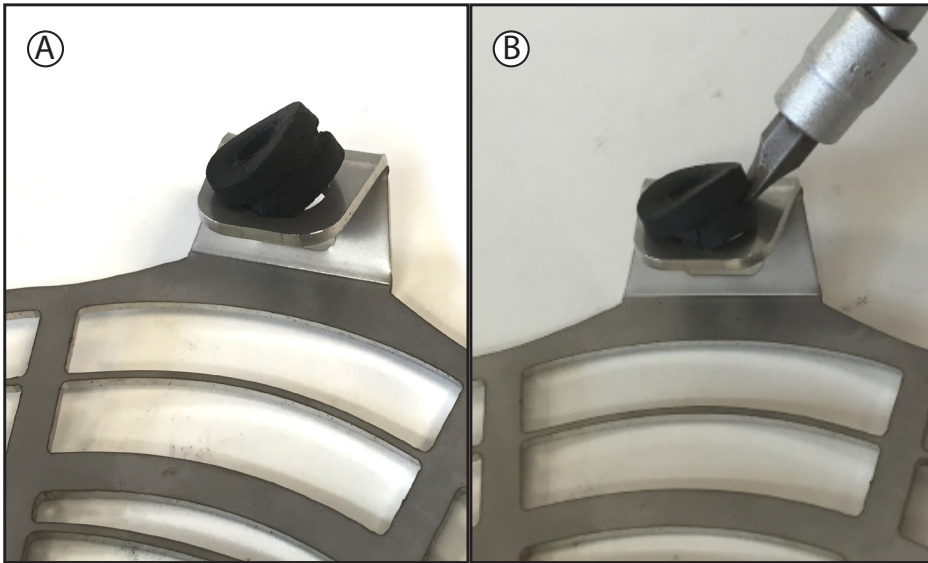
**Kit Contents:**

- ① (3x) M5 x 6 SHCS screws
- ② (1x) left mounting arm
- ③ (3x) aluminum ball studs
- ④ (3x) rubber grommets
- ⑤ (1x) stainless steel guard
- ⑥ (1x) bottom mounting arm
- ⑦ (1x) M6 x 16 BHCS screw
- ⑧ (8x) M6 stainless washer
- ⑨ (1x) right mounting arm

Recommended Tools:

- ① 1/4" driver (shown w/optional ratchet & extension)
- ② 4, and 5mm allen tools
- ③ 10mm wrench

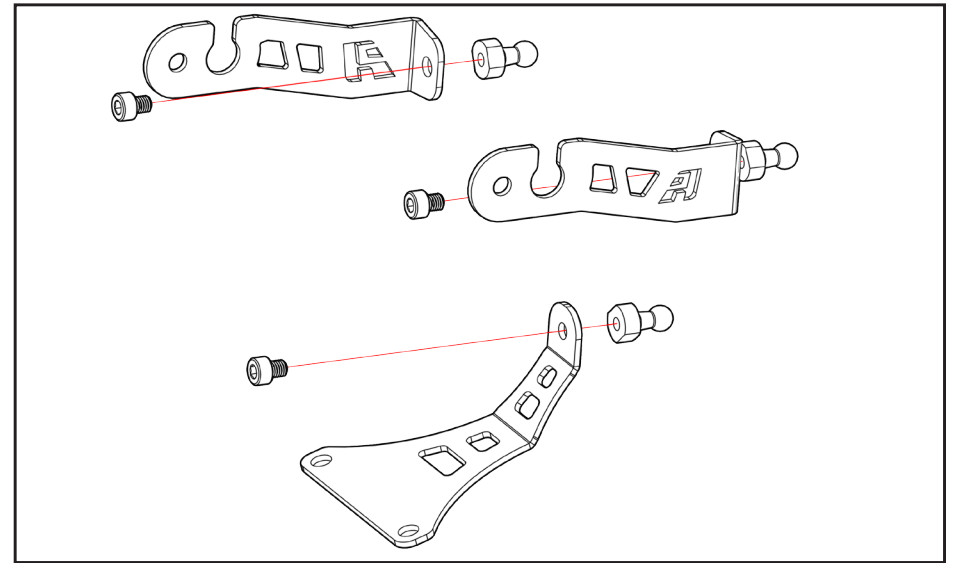




- ① **A** Apply a little lube of some kind (even water will work) to each of the grommets' middle grooved sections and insert into the mounting tab as shown. **B** Using a flat head or similar tool, press down and inward on the grooved section of the grommet to finish pressing it into position. Do this for all (3x) grommets.



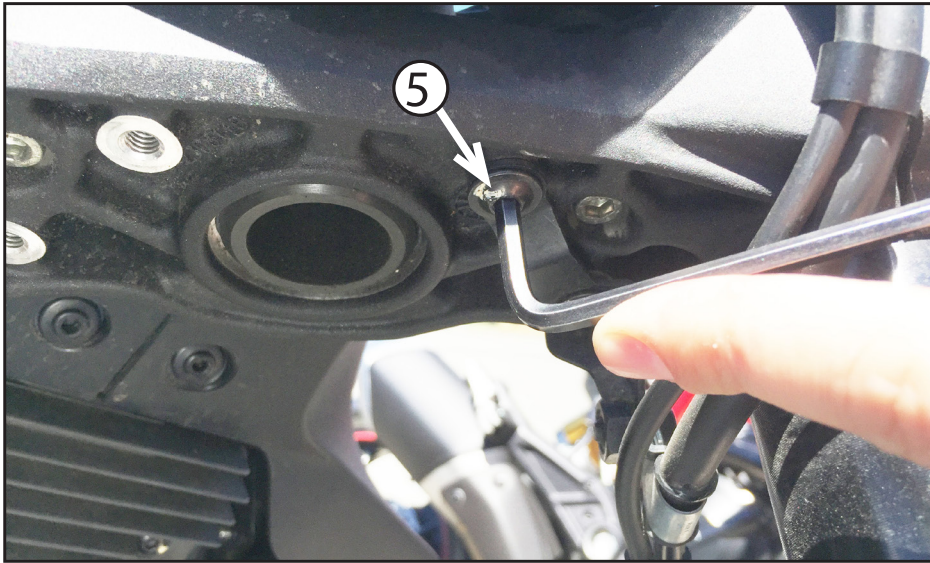
- ③ Use a 10mm wrench to capture the nylock nut on the back of the turn signal stalk. Using a 5mm allen tool, remove the locking nut and M6 OEM bolt. You will re-use the OEM hardware.



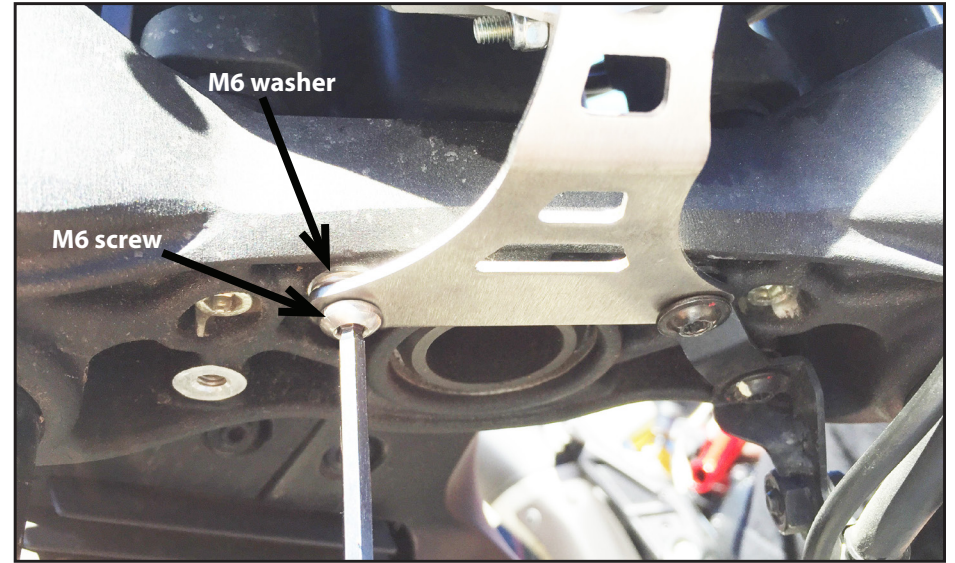
- ② Assemble each of the (3x) arm brackets as shown above. Use a 5mm allen tool and a 10mm wrench to hold the ball stud while you tighten the (3x) M6 screws.



- ④ Place the arm with the slot facing UP as shown in the photo. Using the OEM hardware, insert the M6 and have the nylock nut ready to receive it. Tighten this hardware down, leaving one or one and a half turns so you can reposition the arm later in the process. Repeat this process for the left arm.



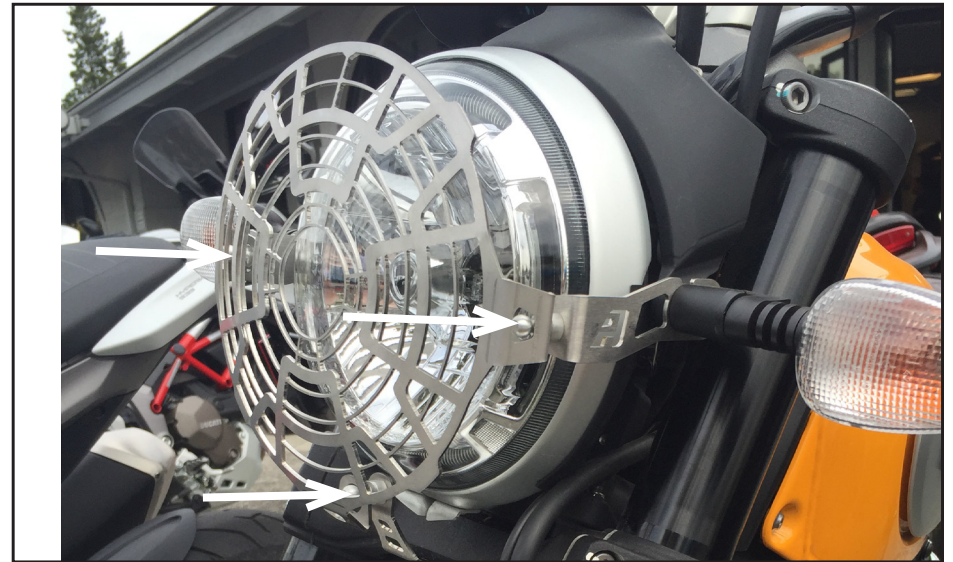
- ⑤ Use a 4mm allen tool to remove the (1x) OEM fastener which holds the brake line hanger bracket to the underside of the bottom triple clamp. You will reuse this fastener.



- ⑥ Use a 4mm allen tool insert and tighten the provided M6x16 Button Head fastener, be sure to place the M6 washer BEHIND the bracket as shown. Use a 5mm allen tool to reinsert and tighten the OEM M6x16 button head.



- ⑦ Now that all (3x) bracket arms are in place, check the position of the left and right ball stud ends. Use a straight edge if you like to align the left and right arms so that the ball studs are roughly aligned with the center point of the headlamp. Using the 10mm wrench and 5mm allen tool, complete the tightening of the OEM M6s to secure the arms.



- ⑧ Finally, carefully press the rubber grommets over the ball studs. You can do this one at a time by applying pressure to the areas indicated. Apply some form of lubricant to the rubber grommets (even some water will work) and then use the heel of your hand to press each ball stud into the sockets.

CONGRATULATIONS!

You've completed your installation. If at any point you have questions about your installation or have any feed back for us, we'd love to hear it. A downloadable version of these instructions can be found at our web site. www.AltRider.com

After 5 hours of riding, or 100 miles, check all the fasteners on the assembly to ensure they are tightened to spec.

Global Office:

email: info@AltRider.com
phone: +1 206-922-3618
address: 4000 Aurora Ave N
Ste 100
Seattle, WA 98103

Europe Office:

email: info@AltRider.eu
address: AltRider EU
Heliumstraat 230
2718 RS Zoetermeer
The Netherlands

TERMS OF USE, WARRANTY AND LIABILITY WAIVER

AltRider LLC, a Washington company, having its principal place of business in Seattle, WA ("AltRider") offers its motorcycle accessories (the "Product") with the terms, conditions and notices as follows:

Terms of Use

This Product is offered to you conditioned upon your acceptance without modification of the terms, conditions, and notices contained herein. Installation and/or use of this product implies acceptance of all such terms, conditions, and notices. If you do not agree to these terms, do not buy the Product. If you have already bought the Product and do not agree to these terms, return this Product promptly including the packaging and all written materials, to AltRider.

Limitation of Liability and Warranty Disclaimer

You may return your merchandise for a full refund or exchange, less any original or return shipping fees under these conditions:

1. Only if the merchandise is in 100% factory condition. Original manufacturer's packaging and same condition as sold – original boxes, packaging material, instructions, documentation, parts, and attached tags.
2. Only unused, unscratched, uninstalled, undamaged merchandise will be accepted. Do not install equipment until you are sure you want to keep it. Package items carefully in protective materials before returning them. Never ship an item in its original manufacturers packaging – it will arrive damaged. Please use a postal box or other adequate packaging to ensure your return or exchange is not damaged on the way back to AltRider.com.

To read more about our exchanges and returns policy, on the web, navigate to <http://www.alt rider.com/info/exchangesAndReturns>

Excepting the warranties stated in the preceding paragraph, AltRider hereby disclaims all other warranties and conditions with regard to the Product including all implied warranties and conditions of merchantability and fitness for a particular purpose. There are no warranties which extend beyond the description on the face hereof. AltRider does not warrant against damages or defects arising out of use or installation of the Product. Installation instructions are provided for your convenience. AltRider is not responsible for any damages arising out of the installation, improper or otherwise, of the Product. No warranty of any kind, expressed or implied, is made regarding the safety of this Product.

To the extent allowed by law, AltRider shall not be held liable for any direct, indirect, punitive, incidental, special or consequential damages arising out of, or connected with, the use or misuse of this Product. Buyer assumes all risks and liability arising from use of this Product.

Entire Agreement

This document states the entire obligation of AltRider with respect to the Product. If any part of this agreement is determined to be void, invalid, unenforceable or illegal, including, but not limited to the warranty disclaimers and liability limitations set forth above, then the remainder of the agreement shall remain in full force and effect.

Applicable Law

This agreement is governed by the laws of Washington, USA. You hereby consent to the exclusive jurisdiction and venue of the courts of Washington, USA, in all disputes arising out of or relating to the use of this product.

